

Henry County Library System

**A place of
Life long learning
&
Life long reading pleasure**



LIBRARY FACILITIES PLAN 2007-2030

**Henry County Public Library System
Board of Trustees**

Table of contents

PART I

- I. Introduction & County Demographics**
 - A. Population Characteristics**
 - B. Economic Characteristics**
- II. Standards**
- III. Branch Service Areas**

Part II

Basic Standards for Determining Library Facilities for 2007-2030

Collection Size

Service Hours

Branch Size Standard

Branch Location

Staffing

**Priorities for Construction of Library
Branches**

Map



I. Introduction & County Demographics

The Henry County Public Library System (HCLS) currently operates a 18,000 square foot headquarters library, McDonough Public Library, which houses both the Administration Offices and the Public Library. There are three branch libraries (a 15,000 square foot Cochran Public Library in Stockbridge, a 15,000 square foot Locust Grove Public Library, and a 5,700 square foot Fortson Public Library in Hampton.) The Fairview community Library of 15,000 square feet is under construction and should be completed in mid-2007.

These facilities provide library services to an estimated population of 176,900¹. The Atlanta Regional Commission estimates that Henry County is the “10th most populous county in Georgia and the 7th fastest-growing county in the nation since 2000. At 323 square miles, Henry ranks 93rd (out of 159) in the state in areas and is the 5th largest in the 10-county region.”² According to the 2005 American Community Survey, 66.7% of the residents were white, 26.8% were black, 4.0% Hispanic or Latino, and 2.50% all other races. Total housing units were estimated at 64,533.³

Atlanta Regional Commission, Henry County population estimates:

Year	Population	Increase from previous decade
2000	119,341	58,000
2010	187,382	68,041
2020	263,966	76,584
2030	369,611	105,654

Projected Henry County Population Growth to 2030

Population Estimate 2000	Population ARC Estimate 2030	Change	Percent Change
119,341	369,611 (369,701)	+250,270	+209.7%

¹ Estimates for 2006 based upon the report of the Atlanta Regional Commission.

www.atlantaregional.com

² Ibid.

³ U.S. Census Bureau, American FactFinder. www.factfinder.census.gov



The 2007-2030 Henry County Public Library System Facilities Plan has been developed to meet the needs of the citizens now and in the future. This plan has been developed based on existing library standards, demographic projections, and information from Henry County Board of Commissioners Planning Department and GIS Department.

In 1995 the Winfield Group of Atlanta conducted research for the Henry County Public Library System Library Board of Trustees. A Market Research Report for the Henry County Library System was presented on March 16, 1995. Many of the recommendations of that report have been fulfilled such as a larger main headquarters library (this facility will be renovated and enlarged using State of Georgia Capital Outlay Funds/Library Board Funds and should be completed in late 2007 or early 2008) and larger branches that are convenient to the county's residents. The Five-year plan written in 2000 will be mostly completed when the Fairview Library is operational in mid 2007. The one remaining shortfall is the addition/renovation of the Fortson Public Library in Hampton. That facility is 5,700 square feet which is too small to be adequate for current library services to and programs for Hampton area citizens. (Based on the Census Tracts in the Hampton vicinity, the population is 30,511 and, the .6 square feet per person yields a building need of 18,306 square feet.) The Hampton branch was listed as one of the projects for SPLOST II but funding was exhausted before the project could be started.

A. Population Characteristics

The following statistics are from the Henry County Snapshot as summarized by the U. S. Census Bureau American FactFinder:

- According to the 2005 American Community Survey, 66.7 % of the residents were white and 26.8% were black. Hispanic/Latino of any race totaled 4.0%. Statewide, 62.5% of residents were white, 29.2% were black, and Hispanic/Latino 7.1%.
- In Henry County, 28% of the county's population were age 18 or younger, while 5.9 % were age 65 or older. Stateside, 26.7% were age 18 or younger, while 9.2% were age 65 or older.

- Henry County School System reports that 5.4% of students dropout in grades 9-12 or the graduation rate is 73.8%. Statewide, this rate is 4.7%. (Data from Henry County Schools)
- Henry County School System spends \$6,392.82 per student. This amount was below the statewide amount of \$7,425.52. Henry County has the lowest per student expense in the state of Georgia. (Data from Henry County Schools)
- There were 64.1% of Henry County's graduating students eligible for the HOPE Scholarship compared to 61.7% of students statewide. (Data from Henry County Schools)



B. B. Economic Characteristics

In terms of median household income, Henry County ranked at 6th place out of the 15 metropolitan counties within the Atlanta Regional Commission area. Henry County ranked 8th in per capita income

Per Capita Income – 2000 Atlanta Metropolitan Area

Median Household Income - 2000 Atlanta Metropolitan Area

County	PerCapita Income	County	Median Household Income
1. Fulton	\$30,003	1. Fayette	\$71,227
2. Fayette	\$29,464	2. Forsyth	\$68,890
3. Forsyth	\$29,114	3. Cherokee	\$60,896
4. Cobb	\$27,863	4. Gwinnett	\$60,537
5. Gwinnett	\$25,006	5. Cobb	\$58,289
6. Cherokee	\$24,871	6. Henry	\$57,309
7. DeKalb	\$23,968	7. Coweta	\$52,706
8. Henry	\$22,945	8. Paulding	\$52,161
9. Coweta	\$21,949	9. Douglas	\$50,108
10. Douglas	\$21,172	10. Dekalb	\$49,117
11. Georgia average	\$21,154	11. Fulton	\$47,321
12. Paulding	\$19,974	12. Newton	\$44,875
13. Newton	\$19,317	13. Bartow	\$43,660
14. Bartow	\$18,898	14. Clayton	\$42,697
15. Clayton	\$18,079	15. Georgia average	\$42,433
16. Carroll	\$17,656	16. Carroll	\$38,799



II. Standards

The standard for the size of public libraries recommended by American Library Association until 1980's was .6 square feet per capita but many libraries have ceased to use that number because of the changing face of public libraries. Library planners felt that .6 per capita was too small and offered too limited a space for the activities that are currently being offered.

However, in the Public Library Capital Outlay Grants Guidelines (2006 Draft), the per capita space of .6 square feet per capita is used as a planning tool. It should be understood that local conditions should be the ultimate guide to space planning but probably 6,000 square feet is the minimum space needed for basic branch public library service. Libraries are now expected to provide rooms for meetings, computer labs, and areas for young adults and children. Some libraries provide space for adult education and English as a Second Language classes. In addition for planning purposes, conditions such as high population density, nearness to public schools, and/or institutions of higher learning will all necessitate a larger than .6 square feet per capita.

- According to information from a report for Public Libraries Southern Beaufort County Library, SC, January 2005, 1.25 to 1.6 square feet per capita is necessary for current programming needs.
- Based on the population from the 2000 US Census of 119,341 and the .6 square feet per capita standard, the Henry County Public Library System should have 71,605 square feet. When the Fairview Library is completed, the Library System will have 68,700 square feet. (The Fortson Branch in Hampton which was on the SPLOST II list will not be expanded in SPLOST II due to lack of funds. This branch will be placed on the list for SPLOST III.)
- For the Henry County Library System to adequately serve the county population, to provide the level of service expected by those patrons,

and to allow development of new services for the future, it is suggested that the standard should be set between .6 and 1.25 square feet per capita, perhaps .8 to 1.0 square feet per capita based on the population density of a specific area.

Another standard that should be addressed along with building size is the collection size. Georgia Public Library Standards issued in 2000 by the Planning and Evaluation committee for Georgia Public Libraries under the auspices of the Georgia Public Library service sets three levels of collection standards for public libraries:

Essential service	2 volumes per capita
Full service	3 volumes per capita
Comprehensive service	5 volumes per capita

At the end of Fiscal Year 2005-1006, the Henry County Public Library System owned 156,372 items including books, tapes, CDs, and DVDs. Whether you estimate the population of the county at 176,900 or 184,000, that is less than 1 book per person. That means that the Library System is below the Essential or basic service in the Library Standards. The Henry County Public Library System Board of Trustees has set a goal of 2 volumes per capita over the next 5 years. That goal of 2 volumes per capita for the Library System would reach 739,222 volumes in 2030 based on an estimated population of 369,611 (in some areas on the ARC and/or Census Tract, this figure is 369,701). Accommodating this collection will require substantially increased library space over the next twenty years.



III. Branch Service Areas

Research in urbanized areas has indicated that over 85% of library use commonly comes from person living within a two to three mile radius. Optimum service populations for branch libraries vary from 20,000 to 50,000 residents depending upon the size of the facility and the density of the population. For example, a 12,000 square foot branch would ideally serve a population of 20,000 residents (.6 square feet per capita) living within two miles in a moderately dense area, or within a three to four mile distance in a densely populated area.

HENRY COUNTY PUBLIC LIBRARY SYSTEM CURRENT AND FUTURE LIBRARY FACILITIES

CURRENT FACILITIES

McDonough Library	18,000 square feet
Administration Addition	8,000 +/- square feet
Cochran Library in Stockbridge	15,000 square feet
Locust Grove Library	15,000 square feet
Fortson Library in Hampton	5,700 square feet
Fairview Library	15,000 square feet

FUTURE FACILITIES

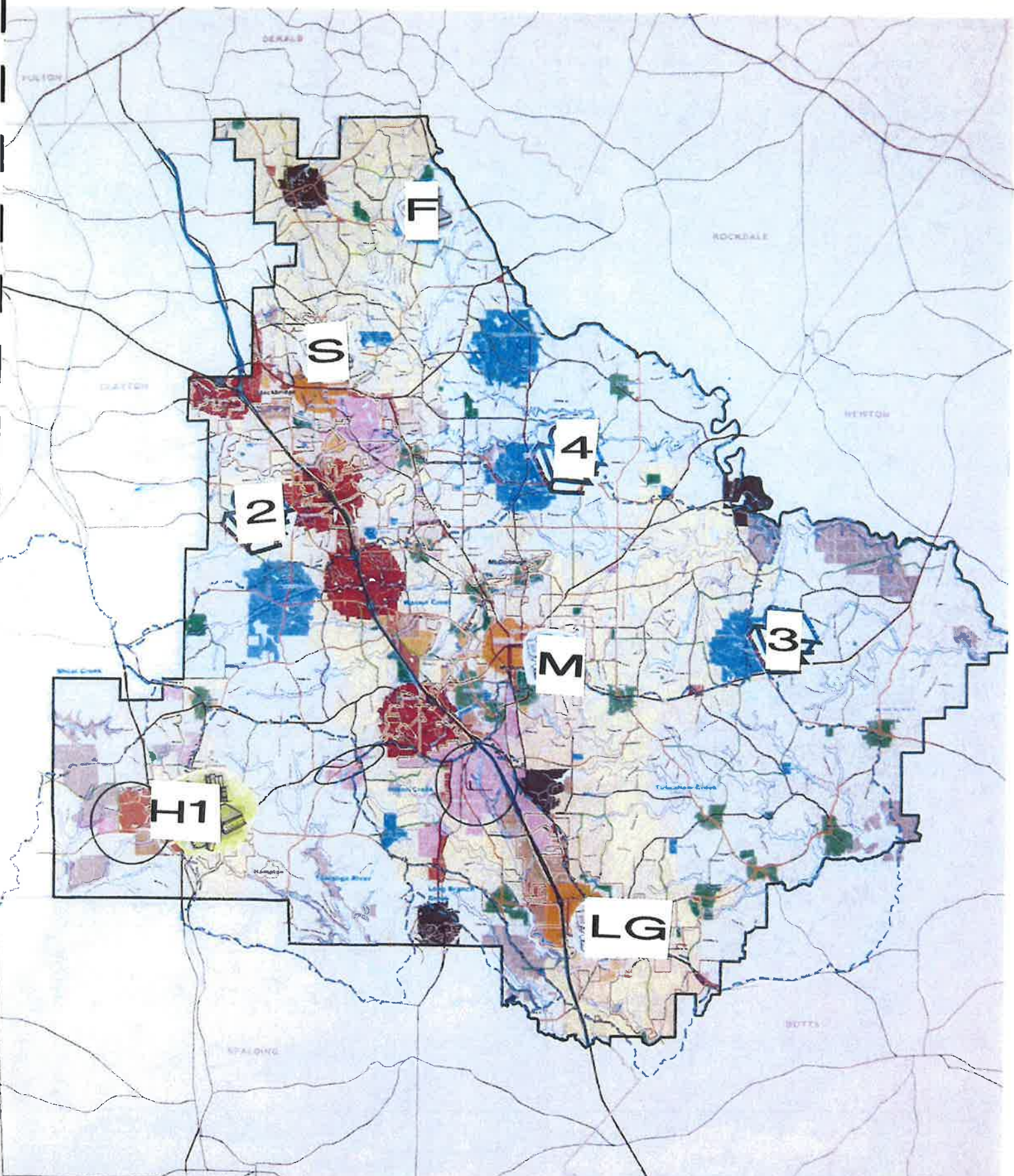
Fortson in Hampton (enlarged and renovated or new construction)	35,000 square feet*
Stockbridge West (west of I-75)	26,000 square feet*
Ola area	34,000 square feet*
Timberridge/Union Grove area	34,000 square feet*

*Listed in priority order.

MAP LEGEND

M=McDonough
S=Stockbridge
LG=Locust Grove
H=Hampton
F=Fairview

1=Hampton addition/renovation or new facility
2=Stockbridge West
3=Ola area
4=Timberridge/Union Grove area



**Henry County 2030
Comprehensive Plan**

*Future Development Map
October 30, 2006*



Future Land Use

- Rural Residential
- Low Density Residential
- Medium Density Residential
- Medium-High Density Residential
- Street Use/High Density Residential
- Commercial
- Industrial
- Public Institutions

Activity Centers

- Park/Recreation/Conservation
- Transportation/Commercial/Office
- Districts
- Retail Node
- Suburban Employment Center
- Town Center
- Village Center

Functional Road Plan

- Intersecting Lightways
- Main Arterial - US and State
- Major Arterial - Other
- Major Arterial
- Collector Roads
- School
- Interstate Highway
- Major Road

Use With New Road

- District
- 100 Year Expansion Road Street
- Potential Districts
- Live/Work
- Future Boundary
- City Boundary as of 10/30/06
- County Boundary

